

GELBVIEH GAZETTE

The Australian Gelbvieh Association Inc C/- ABRI, UNE, Armidale NSW 2351
Phone: 02 6773 3022 Fax: 02 6772 1943 Email: gelbvieh@abri.une.edu.au

Composite Register

A new and exciting opportunity is now in place for Gelbvieh breeders to record composite cattle with the Gelbvieh Association. By recording Composite cattle, the Association will maintain accurate pedigree information enabling Gelbvieh BREEDPLAN to accept weights for a future Crossbred GROUP BREEDPLAN analysis, enabling crossbred bull breeders and breeders of crossbred females to supply buyers with more information.

Composite recording is for no fee, that's right **NO FEE UNTIL THE END OF 2003.**

COMPOSITE REGISTER = \$0.00

The aim is to provide EBVs on crossbred animals. To do this a large and useful amount of data must be collected. By providing this free service, the Council is hopeful members and commercial crossbred herds will take advantage and pedigree record as many crossbred animals as they can, and submit their weights to Gelbvieh BREEDPLAN, again for no fee.

The current Gelbvieh EBV analysis is a purebred analysis. Gelbvieh BREEDPLAN has recommended a purebred analysis for 2002 and for the testing of a crossbred analysis in 2003, unless a significant amount of data becomes available sooner. The Gelbvieh Association is in a unique position to establish a significant database of weights across a wide-range of breeds.

All animals are included in a crossbred analy-

sis regardless of their Gelbvieh content provided there is adequate linkage within the database. Gelbvieh BREEDPLAN recommends the use of performance recorded Gelbvieh somewhere in the pedigree of their crossbred progeny. e.g. An Angus Female herd joined to a Gelbvieh performance recorded bull producing Gelbvieh X Angus calves is excellent.

BE SURE TO USE PERFORMANCE RECORDED GELBVIEH.

As members, you have nothing to lose whilst a good database of weights and pedigrees is collated.

Other breed societies are attempting to establish a composite register, however they are having difficulty because they must charge a fee for the recording of animals and their weights. This results in a lower than expected uptake due to a reluctance to pay when they receive no EBVs until a good database is built.

Thus, what came first the chicken or the egg? Without a good data set, the analysis will not be successful. Therefore, if there is widespread support for a composite register it should prove to be very successful for the long term future of the Gelbvieh Association.

If you are interested in recording animals on the Composite Register please contact the Association. If you are not a member please note that the minimum requirement in terms of membership is commercial membership.

Pen Cards

The Gelbvieh Association has pen cards available from the Association for no fee, regardless of whether or not you are a member. They are designed for use at sale yards to display the particulars of your Gelbvieh/Gelbvieh cross cattle.

There is a perception in the market place that any animals sold at sale yards that appear to be of

European origin and are red in colour must be Limousin cross. To counter this the Association has printed these cards so anyone passing the cattle at the sale will immediately be aware they are Gelbvieh/Gelbvieh cross cattle.

Please contact the Association for cards - contact details above.

May/June/July 2001



Increase in Blood Typing Fees

Effective 2nd April 2001

The fee structure will be as follows:

\$35 - per Blood type

\$40 - Blood Type and 1 Parentage Verification

\$5 - for each extra Parentage Verification

\$5 - handling fee when Parentage Verification requests are sent in separately after initial Blood Typing results are finalised.

ALL FEES ARE + 10% GST

The fees must accompany blood samples and/or parentage requests.

A \$10 Administration Fee will be charged for blood samples or Parentage Verification requests which arrive without payment.

Please note freight costs continue to be the responsibility of the consignor.

Please do not hesitate to contact The University of Queensland should any of this need clarification.

Johanna Van Elten, The University of Queensland,

PO Box 125, KENMORE QLD 4069

Ph: 07 3365 5743, Fax: 07 3365 5788

Embryo Recording Regulations

The Council at their recent meeting elected to discontinue with much of the requirements for recording and transferring Gelbvieh Embryos.

All the Association requires is that the correct particulars are forwarded to the Association at the time of Embryo Calf registration. They are to be submitted on the new **Embryo Registration Form**. (Available on request from the Association).

If a member is transferring embryos, the As-

sociation does not need to be notified. The Association asks that when embryos are by a **Royalty Sire** the purchaser is informed of the Royalty on calf registration. All Royalties are paid to the owner of the Royalty Bull. An **AI Royalty Certificate** must be forwarded WITH the REGISTRATION. Otherwise, there will be long delays in getting the calf/ves registered.

Promotional Video

The Victorian Members have produced a fabulous Gelbvieh promotional video that is available to all members for no fee. The Victorian members ran the advertisement on WIN Television in the lead up to the Lardner Field Days where they received 53 enquiries for Gelbvieh from people who had seen the advertising on television.

Members can contact Larry Cutler, Ph: 03-

5635 2244 - if you wish to get a copy of the video to either use as television advertising or to run at field days.

A copy of the video is available to all members for no fee, however if you wish to individualise it with your stud name, special event or branch, WIN will charge \$50.

2001 National All Breeds

Junior Heifer Show

The 2001 National All Breeds Junior Heifer Show was held at Dubbo following the Sydney Royal Easter Show. This event is the biggest All Breed Junior Heifer Show in NSW developing itself over the last nine years into a prestigious event for young stud cattlemen and women.

Gelbvieh were represented by Nathan & Alex Steinbeck, Natasha Kelly, Elyse & Luke Burton, and of course their parents who put a great deal of time into getting these juniors to the event.

This year Gelbvieh, like last year, were extremely successful amongst some very stiff competition. The Gelbvieh team were awarded the Most Successful Breed prize for the second consecutive year. The Gelbvieh team of seven animals won this ahead of the biggest teams being the Shorthorns with

36 head and the Poll Herefords with 28 head.

The Senior Champion Herdsman was awarded to Nathan Steinbeck ahead of 37 other senior competitors. Nathan certainly put on a very good display given that the Senior division is very, very competitive as many of these paraders are actively exhibiting animals at Royal & Regional Shows.

In the Junior Judging Competition Luke Burton won the Pee Wee division and then went on to place 5th in the Pee Wee's Paraders Competition and under 10 years, Class1. At age 7 years, Luke is certainly displaying the right stuff to go on to be an excellent judge of cattle.

Luke's sister Elyse aged nine was 2nd in class 2 of the Pee Wee Paraders Competition. Congratulations to Elyse for a great effort.

In the Senior 17 and under 25 years division of the Paraders Competition Nathan Steinbeck placed second in his class amongst some very stiff competition.

The Junior All Breed Bull Bonanza Judging Competition was extremely well supported with 23 bulls entered. There were two Gelbvieh bulls entered in this competition where SSF Ultra Turbo paraded by Nathan Steinbeck placed second in his class to the Shorthorn bull who was later judged Reserve Champion Bull.

The Interbreed Heifer Judging, Calf 6 months and under 12 months, class 19 was won by Natasha Kelly with RP's Alice. The pair then went on to be

awarded Reserve Calf Champion from 37 entries.

There were 96 competitors between the ages of 5 and 25 years parading ten different breeds. Our Gelbvieh Competitors put in a tremendous display of judging, parading and herdsman skills. Congratulations to all the competitors and let's aim to double the Gelbvieh team in 2002.

Clarkes Hill

Clarkes Hill Gelbvieh topped the Southern Highlands Angus & Angus-Infused Inaugural Sale at Moss Vale on 11 May. A pen of 8 1/2-9 month old steers topped at \$634.00 while (purebred) Angus came in second with \$632.00.

President's Report

As the new President of the Australian Gelbvieh Association, I would firstly, on behalf of Members, like to thank past President Rob McGregor and Darryl McCarthy for their long service on Council. Both have been huge contributors to the breed and will continue to be, while having a rest from Council. I thank the Council for their confidence in me to take on this role. With the help of Council, Members and Lisa, I will do my best, so WE as a group can take the Gelbvieh Breed in Australia to another level.

While you are reading the Gazette, Councillors are putting ideas together for a strategic plan to take the breed forward over the next 5 years. If you have some ideas please send them in writing to Lisa in the next 10 days. All input will contribute to our "think tank".

The Gelbvieh breed is about 11 to 12 years old in Australia, for a small breed we underestimate our achievements during that time. Please refer to the Graph, detailing the growth pattern of the American Gelbvieh Association in terms of registrations, within both the Herdbook and Composite Register. We have followed similar trends. Look what happens after years 11 and 12. Let us work together to make it happen in Australia.

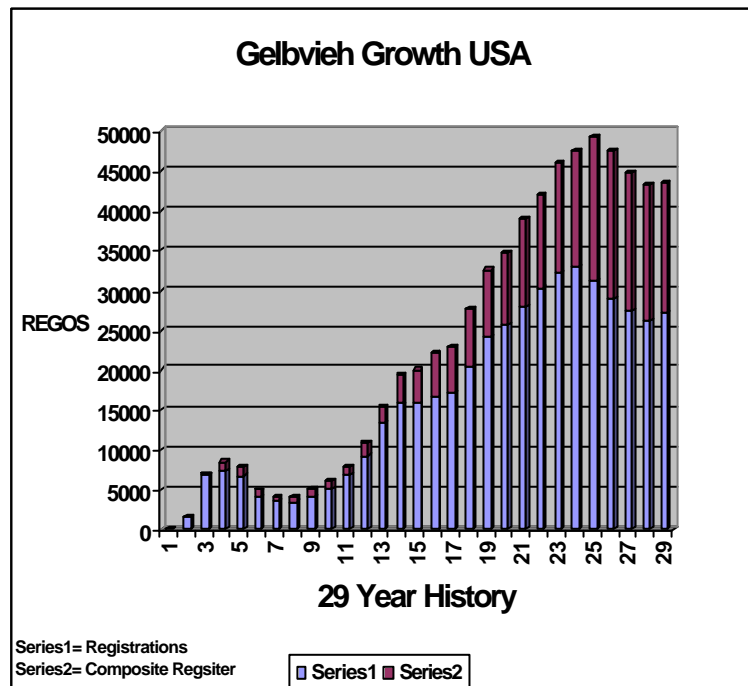
Congratulations to the Victorian breeders for their success at the Gippsland & Lardner Field Days, a great effort and excellent results.

Congratulations to the team of Juniors who for the second year in a row made Gelbvieh the Most Successful Breed at the National All Breeds Heifer Show in Dubbo.

Congratulations to those whose Gelbvieh X

cattle who continue to top sales around Australia. Please send Lisa any of your success stories and photos if you have them for our file for future promotion.

Take advantage of the **FREE** recording service for your composite cattle and please submit



their performance (weights) to Gelbvieh BREEDPLAN. Remember Gelbvieh were the Continental Breed of Choice at the USA Composite Breeders Forum.

Please send your BREEDPLAN weights in to Gelbvieh BREEDPLAN as NO weights represents NO BREEDPLAN figures. Please keep your records up to date with the Association and please feel free to communicate with Barb, Lisa, Councillors or myself. Member participation and cooperation will help take our breed forward.

We have a great breed with a great future. Let us make it happen. *Richard Sullivan, President*

Vale - Victor Guyatt

Sadly, one of our newest Gelbvieh members, Victor Guyatt, was tragically killed in a horse fall on 24th March at his property "Rocky Hills", Injune. Victor only joined the Association in October 2000, however during his short association with Gelbvieh he built up a nice herd of cattle. He commenced his association with Gelbvieh through Norolle Cattle Company with some bulls and later, with his mother, Mrs Vi Guyatt purchased some females to start the stud.

Sale Results

Gelbvieh and their crosses have been coming through **Warwick Sale yards** regularly during the last couple of months. April 17 a pure bred from K J Stephens, Swan Creek topped the yearling steers at 198.6 cents, weighed 430kg to realise \$853. Apparently he had been drinking off TWO cows!! The previous week I & V Rogers topped the yearling steers with a 3/4 Gelbvieh at 194 cents, weighed 380kg to return \$735 and a 3/4 yearling heifer topped her section at 194 cents, weighing 365kg to return \$706. Anyone with F1 females are assured of a good sale, as people are looking for them in this area.

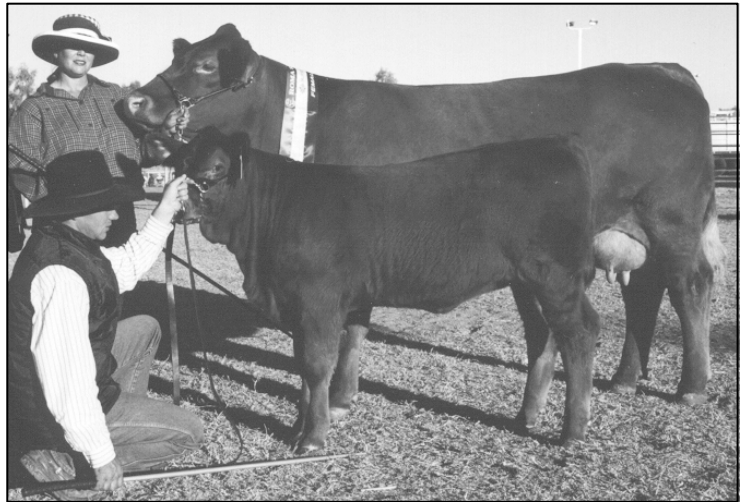
Also at a sale in **Stanthorpe** on April 27, 18 Gelbvieh/Braford heifers PTIC 4-5 months, sold by Dick Bonner, Liston averaged \$800 - sold to Frasers, Warwick.

2001 Roma Show

On Friday 11th May at the 2001 Roma Show, the Interbreed Competition was contested by 11 beef breeds.

Interbreed Champion Female, who was also the Supreme Beef exhibit at the 2001 Goondiwindi Show, was Senior and Grand Champion Gelbvieh Female **NOROLLE LADY IN RED T62 (P) ET** exhibited by Norolle Cattle Company, Roma.

Right: Pictured at the 2001 Roma Show are Kirrily and Gavin Iseppi with Norolle Cattle Co. Interbreed Champion Female - NOROLLE LADY IN RED T62 (P) ET. Also Supreme Exhibit at the 2001 Goondiwindi Show. Her four month old heifer calf is by FIRE POWER 101F.



2002 World Gelbvieh Conference Postponed

The American Gelbvieh Association Board wish to advise that they decided it was in the best interest of Gelbvieh breeders throughout the world to postpone the 2002 World Gelbvieh Conference until 2003 or later due to risk of foot and mouth disease. The board felt that it would be best if we were proactive rather than taking the wait and see the approach.

Survey BJD testing underway

Testing for Stage One of the BJD South-East Beef Cattle Survey is well on track, with close to 8000 cattle tested so far.

By the end of March, 46 herds had been tested, of which 34 tested negative to the initial ELISA screening test. Twelve herds had reactors to the ELISA test. The proportion of reactors found so far is similar to the false positive rate that was expected - about two false positive reactors for every 1000 cattle sampled.

These reactors are followed-up by faecal culture or post-mortem examinations to determine whether they are infected or not. At the time of writing, one infected animal had been confirmed by post-mortem examination.

According to Mr Keatinge, Survey Management Committee Chair, there are still over 100 herds to be tested in Stage One. "It is early days, so we can draw no conclusions at this point," he said.

"We ask that producers not lose sight of the objective of this Survey which is to free-up trade and movement restrictions on beef cattle."

Stage One testing commenced in January following an analysis of producer questionnaires that found no important differences between participants and non-participants.

"We are working towards a mid-April target date for the completion of Stage One testing," said Mr Keatinge. "At that time the Survey Management Committee will review Stage One results before making any decision to proceed to Stage Two of the Survey," he concluded.

The BJD Survey is a partnership between the Cattle Council of Australia, the Australian Lot Feeders' Association, Meat and Livestock Australia and the State and Federal Governments and is being managed by Animal Health Australia.

JD News, Autumn 2001

Improved register of market assured animals

Lists of MAP herds and flocks have been available on a commercial fax-back service and more recently, on the Animal Health Australia John's disease web site.

With access to the Internet increasing and use of the fax back service falling steadily, the fax service was closed at the end of March 2001 after six weeks' notice.

Technical problems with the web site search facility late last year have been resolved and the web site will be further upgraded to include additional searching capacity and to allow for faster updates.

The list of MAP assessed herds and flocks can be found at:-

<http://www.aahc.com.au/jd/maps/inde.htm>

JD News, Autumn 2001

History Repeats

When Keith and Margaret Single exhibited the grand champion bull and grand champion cow in the Gelbvieh section of the Sydney Royal Show in 1995, the judge opted to break with tradition and award the best exhibit rosette to the cow.

And this year, history repeated itself, with the breed stalwarts and their Gold Bar S stud, Dungowan, again parading the champion bull and cow, and the judge again elevating the female to best exhibit status.

"She was a very, very functional and structurally sound cow with an excellent calf," said judge Larry Cutler, Ebony Lodge, Willow Grove, Victoria. "And she is rearing a calf that is going to be as good as, if not better than the cow."

The calf was by Northern Gold Lobo, which also sired the fifth-placed heavyweight steer on the hoof.

The cow, Gold Bar S Posso, by Gold Bar S

Hot Shot, had actually enjoyed success before.

Ironically, it was paraded as a calf at foot when its dam received the same Sydney best exhibit broadribbon.

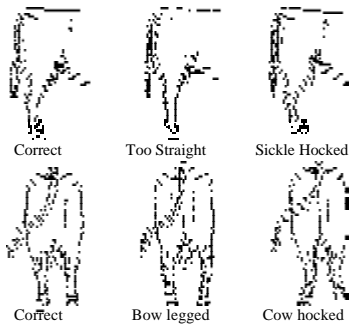
In contrast, it was the bull's first show outing. By Hyek Polled Mastermind, Gold Bar S Mastermind weighed 660 kilograms for a gain of 1.37kg a day with fat scans of five millimetres at the rump and 2mm at the rib site; its eye muscle area was 108 square centimetres.

The stud also showed the reserve junior champion female. Double Bar S, at the conclusion of judging was awarded another broad ribbon for Most Successful Exhibitor.

Oatlands Lady Madonna 2, by the US sire LAR Mr Sensation 5062 (imp USA), owned by Gavin Kallady, Oatlands stud, Nar Nar Goon, Vic, was sashed as junior champion female.

The Land, April, 2001

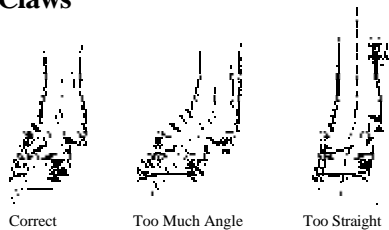
Structural & Breed Soundness



The structure of the hind legs is similar to the front. Again there are well defined angles in the joints at the hip, stifle, hock & pastern joints.

The angles are critical, particularly during serving when large amounts of stress are placed on these joints. Deviations from the correct angle will cause excessive wear & tear on the joints, leading to early breakdown. More bulls seem to break down from problems associated with the hind leg than from any other reason.

Claws



The way the claws of the feet grow often indicates structural problems higher up the legs. Long or excessively short even claws may indicate too much or not enough pastern angle, causing both claws of the hoof to grow or wear excessively.

Overgrown claws affect the mobility and performance of the animal.

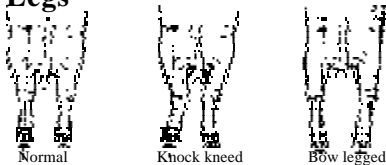
The Sheath



The Sheath should be trim & close to the body. A long sheath or an excessively angled sheath is more prone to injury or infection (from grass seeds, and other foreign objects) & should be avoided.

Some breeds are more susceptible to these problems & buyers of these cattle must be critical in their selection.

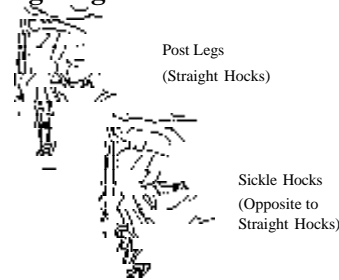
Legs



The front legs of the bull should be straight when viewed in front. On a structurally

sound animal, a vertical line may be drawn from the point of the shoulder to the middle of the claw.

Leg Angulation



Post Legs - These cattle generally walk short & have worn 'boxy' toes. They are prone to arthritis in the hips & other joints, and damage to the ligaments.

Sickie Hocks - The joints are over-angled, leading to overstepping & long overgrown claws and lameness. Moderate cases are not a concern, but bad sickie hock strains ligaments, damages the dew claw and affects the serving ability.

Front leg and shoulder structure of the bull (a,b,c)

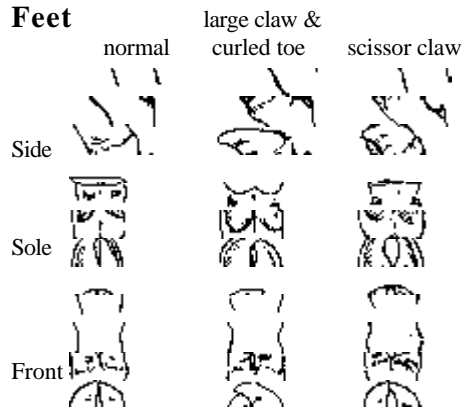


A - Ideal B - Straight Leg C - Too much angle
Boxy foot Long Toe
Straight shoulder Calf knee
Head Down

The shoulders and front leg structure of the bull are shown in the figure above. The shoulders are naturally sloping.

A slope of 45-60 degrees is considered acceptable. A beast whose shoulder blade is tipped forward (straight shouldered) has less angle at the shoulder joint and elbow joint and this reduces the shock absorbing ability of these front joints.

Feet



Avoid overgrown, scissor or curved claws. Mild curling is normal. It is exaggerated by heavy feeding &

soft soils. Overgrown, uneven claws are usually indications of poor limb structure or early signs of hip arthritis. Avoid extremely short feet, which are often associated with overstraight legs.

The Better Bull Buying publication is available through NSW Agriculture.

Better Bull Buying, 7th edition 2000

Royal Easter Show Results 2001

Female, over 12 and not over 16 months

1st Gold Bar S Tiffany, *FK & MR Single*

Female, over 16 and not over 20 months

1st Oatlands Lady Madonna 2, *GP & P Kallady*

2nd Weetalabah Little Willy

WI & GH & AJ & JC Rabone & Nixon

3rd Clarkes Hill Pelletta, *R J Atkins*

Junior Champion Female

Oatlands Lady Madonna 2, *GP & P Kallady*

Reserve Junior Champion Female

Gold Bar S Tiffany, *FK & MR Single*

Female, over 20 and not over 24 months

1st Clarkes Hill Rosemary, *RJ Atkins*

Female, over 24 and not over 30 months

1st Clarkes Hill La Miss Naomi, *R J Atkins*

Female, over 30 months

1st Gold Bar S Possom, *FK & MR Single*
Senior Champion Female

Gold Bar S Possom, *FK & MR Single*

Reserve Senior Champion Female

Clarkes Hill La Miss Naomi, *R J Atkins*

Bull, over 12 and not over 16 months

1st Gold Bar S Mastermind, *FK & MR Single*

Bull, over 16 and not over 20 months

1st Clarkes Hill Medallion, *RJ Atkins*

Junior Champion Bull

Gold Bar S Mastermind, *FK & MR Single*

Reserve Junior Champion Bull

Clarkes Hill Medallion, *R J Atkins*

Grand Champion Bull

Gold Bar S Mastermind, *FK & MR Single*

News from WA

The Cattle Bonanza

An excellent 45 entries contested the E.G. Green & Sons Hoof and Hook competition held on Saturday 21st April at the Cattle Bonanza in Brunswick where a Gelbvieh/Murray Grey cross and Limousin/Hereford cross took out top honours. The Pugh family, Summit Gelbvieh, Narrikup, completed a day of wins, which included exhibiting the senior champion heifer in the led section, by winning the sash for the best lightweight steer or heifer on the hoof.

The Gelbvieh/Murray Grey steer won the lightweight category with 89 points and the Pugh's also placed second with another Gelbvieh cross on 87.5 points. Rounding out the top three was Kim Tuckey, Kookabrook Grazing Co., Pinjarra, with a Murray Grey/Shorthorn cross steer that finished with 82 points.

Trade Cattle

A 542kg Gelbvieh/Murray Grey steer exhibited by John Pugh's Summit Gelbvieh was a stand-out winner in the over 400kg category in this year's trade cattle on Friday 9th March.

The Pugh Family, who run about 2000 commercial breeders and have a feedlot with 1100 cattle, were thrilled with the win.

The 12 month old lot-run steer scored well in degree of finish, structural correctness and fat cover, to end with a score of 86 points, nine clear of second place.

Wagin Woolarama

The Grand Champion all other breeds title went to Gwandallan Verella from Gwandallan Stud, she won from a field of 13 heifers.

Improving Feed Efficiency in Cattle

Most beef producers are probably intuitively aware of the importance of utilising feed resources as efficiently as possible for profitable beef production. The costs of providing feed to cattle are large, and form the major part of the costs of producing beef. For cattle fed intensively, the costs of feed include the cost of purchasing the ration ingredients, costs of processing the feed and feeding out. For cattle on pasture the costs include the cost of land ownership, fertiliser, pasture improvement and supplementary feeding. As feed is such a large component of the cost structure for beef production, improvements in how efficiently feed is utilised will have an impact on profitability.

Feed efficient can be defined in a number of ways, with one traditional method and one more recent method being utilised by the Australian commercial industry. The first of these is feed conversion ratio (FCR), and as the name implies simply refers to the kg of feed required to put one kg liveweight gain on an animal. FCR is useful for considering efficiency of cattle during growth and finishing, and is especially relevant to the feedlot sector where only growing animals are fed. Measuring FCR does not attempt to break down feed requirements into sub-components of maintenance and gain, so is not very

useful for considering feed efficiency in the breeding herd, where females are not growing.

The second, more recently adopted method of defining feed efficiency is that of Net Feed Intake (NFI). Net feed intake refers to the variation in feed intake which remains after the requirements for maintenance and growth are accounted for. It is calculated as the *actual* feed consumed minus the feed intake which the animal was *expected* to eat based on its size and growth rate. Because an efficient animal is one which eats less feed compared to its body weight and growth rate, efficient animals have a negative NFI while inefficient animals have a positive NFI.

Results for tests of NFI, as in those from the Vasse feed efficiency trial express NFI in terms of kg per day, adjusted to an energy standard of 10 mj/kg metabolisable energy in the feed source. Feed costs differences are expressed as the relative savings or the additional costs of feeding individual animals for 3 months based on its NFI. For example, a bull with an NFI of -1.5 would eat 1.5kg less than expected per day, or with feed valued at \$250 per tonne, would eat \$33.75 less feed than expected over 3 months.

VASSE RESEARCH STATION FEED EFFICIENCY RESULTS - GELBIEH ENTRIES

Pen	Tag	Owner	Date of Birth	First Weight (kg)	Last Weight (kg)	Total Feed (kg)	Gain (kg/day)	FCR (kg feed/kg gain)	NFI (kg feed)	Cost Difference (\$ over 3 months)
FIR3	V41	Kelly	17/3/00	556	698	749	1.7	6.3	-2.5	-\$56.25
FIR3	V43	Kelly	6/4/00	552	684	812	1.6	7.5	-1.3	-\$29.25
FIR3	V28	Magini	1/5/00	345	461	588	1.4	5.9	-1.1	-\$24.75
FIR3	V30	Magini	4/5/00	323	454	644	1.5	6.1	-0.2	-\$4.50
35	V12	Pugh	27/4/00	372	528	784	2.3	4.9	0.0	\$0.00
72	Vigo Star	Vinicombe	27/4/00	449	564	819	1.8	6.5	0.1	\$2.25
FIR3	Vance	Vinicombe	1/5/00	440	594	840	1.8	6.6	0.3	\$6.75
FIR3	Vieta	Kitchen	20/4/00	425	570	805	1.6	7.2	0.3	\$6.75
FIR3	Vulcan	Kitchen	3/3/00	460	600	924	1.5	8.6	1.6	\$36.00
Breed Mean				436	573	774	1.7	6.6	-	-

NFE Testing Facilities

Contacts for organisations currently offering facilities for commercial NFE testing include:

Vasse Research Station, Vasse, WA.

Agriculture Western Australia

(contact Richard Morris)

Ph: 08 9780 6282

Rutherglen Research Institute, Rutherglen, Vic.

Agriculture Victoria

(contact Duncan Rowland)

Ph: 03 6030 4587

Pastoral and Veterinary Institute, Hamilton, Vic.

Agriculture Victoria

The Australian Gelbvieh Association Inc.

(contact Mr Bruce Knee)

Ph: 03 5573 0900

Coota Park, Woodstock via Cowra, NSW

(contact Mr Jonathan Wright)

Ph: 02 6345 0326

Tullimba Research Feedlot, Armidale, NSW

Beef CRC

(contact Mr Reid Geddes)

Ph: 02 6778 0140

(Only occasionally available when research requirements allow).